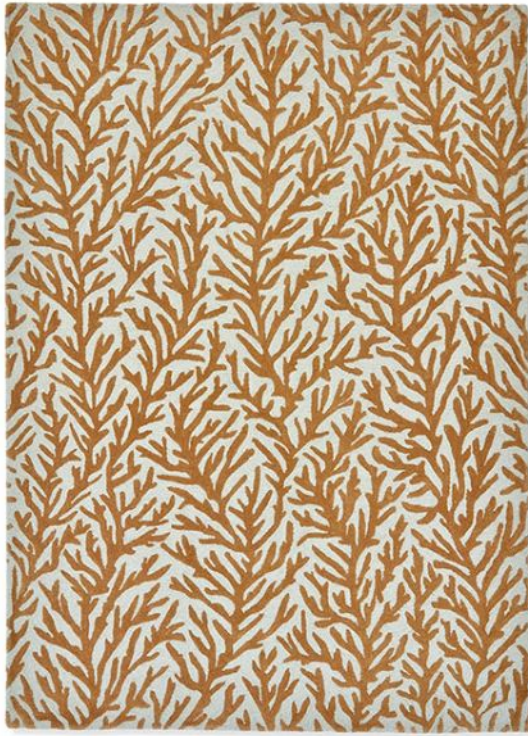


Harlequin Atoll Rug 280cm x 200cm

Welcome the Atoll rug from the renowned Harlequin collection, skilfully crafted by leading rug designers Brink and Campman. Atoll boasts an abstract design, meticulously curated to complement contemporary room settings. Its fashionable colour palette exudes modern elegance. This captivating rug showcases a stunning floral motif, seamlessly blending nature's beauty with abstract artistry, making it an eye-catching addition to your home. Atoll is expertly handcrafted from 100% wool, offering plush underfoot comfort and long-lasting quality. Available in three sizes or request a bespoke option, ensuring a perfect fit for your living space.

Date: 20 May 2024

All prices are valid at time of printing this document and measurements are subject to manufacturers alterations which may not be reflected on this specification sheet or website



200cm(w) 280cm(l)
was £1155 **sale £979**